



## EXPLOSION-PROOF ELECTRICAL CHAIN HOIST BCX



The **BCX** electric chain hoist is the best as versatility and features, matching requirements of hazardous area

---

### High performance equipment

- capacity up to 10T
- bronze sprocket pocket wheels
- high performing chain guide
- load limiter
- stainless steel bolts
- stainless steel accessories
- electric up/down limit switch
- bronze wheels on trolleys
- high quality finish
- high performing motors
- anti-condensation heaters
- thermal probes
- first quality electric control components
- basic hazardous area Zone 2 IIB T3
- IP56 protection

---

### On request

- stainless steel AISI 316 lifting chain
- stainless steel AISI 316 hook block
- stainless steel bearings
- stainless steel AISI 316 side plates trolleys
- sliding assembly of trolley wheels for easy erection
- articulated trolley for curved beams



## EXPLOSION-PROOF ELECTRICAL CHAIN HOIST BCX



APPLICATION	CATEGORY	PROTECTION	EX PROTECTION CLASS
Zone 1	II 2 G	Gas	Exde IIB T4
			Exde II C T4
ZONE 2	II 3 G	Gas	Exde II B T3
ZONE 21	II 2 D	Dust	ExtD A21 IP66
ZONE22	II 3 D	Dust	ExtD A22 IP66

BCX and BCSX hoists are the answer to oil & gas industries requirements, for explosion protection, according to safety regulations for hazardous areas (ATEX/IECEx). All components are manufactured in Europe.

The explosion protected BCX hoists are designed for use in potentially explosive atmospheres in combination with gas or dust.

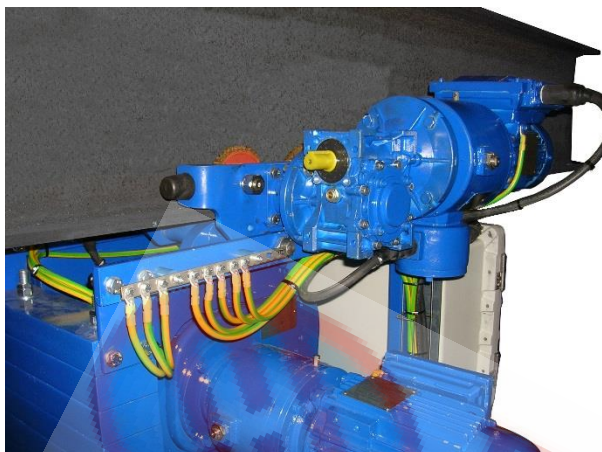
It is charge of users to define his actual requirements.

High performance is typical of this explosion-proof electric chain hoist.

- brake motor with one or two hoisting speeds. Long service life of the adjustable, asbestos free brake
- motor and brake are flame-proof enclosed (EXD) and have PTC thermistor for temperature control
- slipping clutch as overload protection is present for BCX/BCSX hoists with basic load up to 2000KG on one chain fall
- for BCX/BCSX hoists with loads over 2000KG, one chain fall, the overload device is applied as amperometric type or electronic pin type
- electric limit switch, screw type, is applied for high/low hook positions, adjustable
- controls with transformer and main contactors
- high quality aluminum or GRP control pendants are applied, with emergency stop button
- all trolleys are fitted with buffers
- electric trolleys are fitted with electric switch for travel limits



## EXPLOSION-PROOF ELECTRICAL CHAIN HOIST BCX



BCS type hoists are the best solution when two lifting speeds or long lifting heights are present. Two different motors (single polarity) are applied with a differential gear. No clutch or rotor sliding is present.

- standard controls are available for the following supply voltage:

50hz	:	380, 400, 415, 500 V
60hz	:	380, 400, 440, 460, 480, 600 V

control voltages:

50hz	:	110 VAC, 48 VAC
60hz	:	120 VAC, 48 VAC

### - Travel limit switch

A travel limit switch is applied to the trolley on order to limit the cross travel

Available:

- limiting both directions of travel
- switching over from fast to slow (pre-switching) and limiting both directions of travel

### - Hook block

Hook block is supplied as bronze coated. Hook as standard, is supplied painted yellow RAL 1007, hook bronze coated is also available on request

### - Outdoor

For outdoor situation IP66 protection is applied  
Heaters are applied to motors and control box

### - Bronze wheels

Wheels are in solid alloyed bronze

### - Painting/corrosion protection

Blasting of steel structure to degree SA2-protection of the whole hoist/trolley according to ambient and specification as required

### - Towing arm for power supply

The towing arm for festoon system can be supplied. It is applied to the trolley

### - Fall arrest brackets

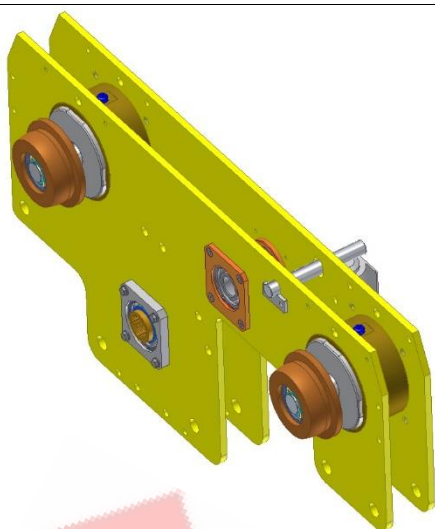
In order to prevent falling in the case of breakage the trolleys are equipped with arrest brackets

### - Buffers for trolleys





## EXPLOSION-PROOF ELECTRICAL CHAIN HOIST BCX



Buffers are fitted to all trolleys as standard

### - Articulated trolleys

Articulated trolleys are used on curved runways. Two travel motors are recommended for narrow bends

### - Main isolator

Max supply voltage 690 V

Explosion protection Exde IIB T4 max Exde IIC T6

Protection to IP65 EN 60529

### - Chain lubricant

A lubricated chain has a longer service life

Liquid grease B0001 and special chain spray B0002 are available

### - Standard load chain

High tensile and surface hardened load chain is electro-galvanized. The standard chain is low wearing. Quality grade according to DIN 5864

### - Stainless steel load chain

Stainless steel load chain is applied in ambients where corrosion is present. In order to get an adequate service life, the nominal capacity of the hoist has to be reduced according to stainless chain features

### - Chain box (chain collector)

Chain boxes can be selected between textile and steel

Special dimensions may be necessary according to the length of lifting chain

### - Runway and stops

Buffers are applied to the trolleys or to the mechanical stops at the end of the runway

The mechanical stops have to be clamped to the runway section

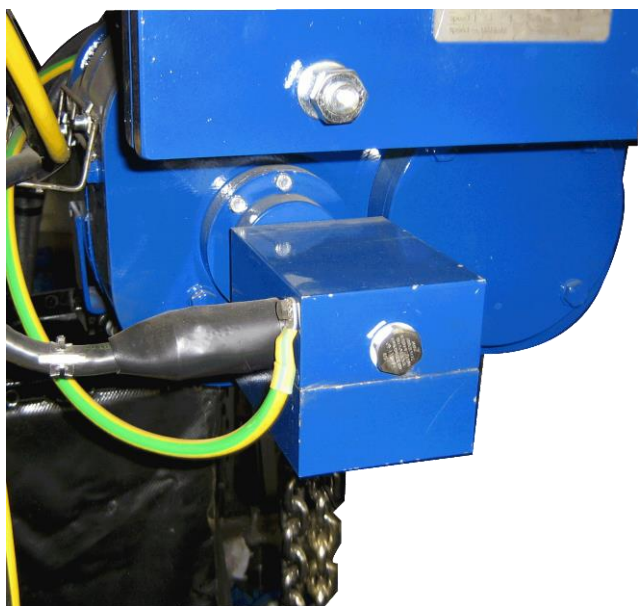
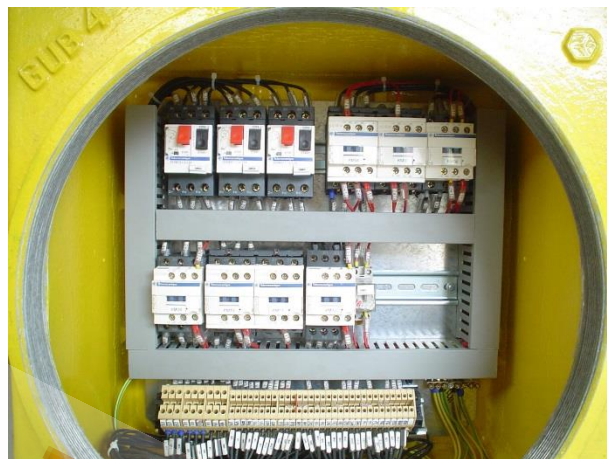
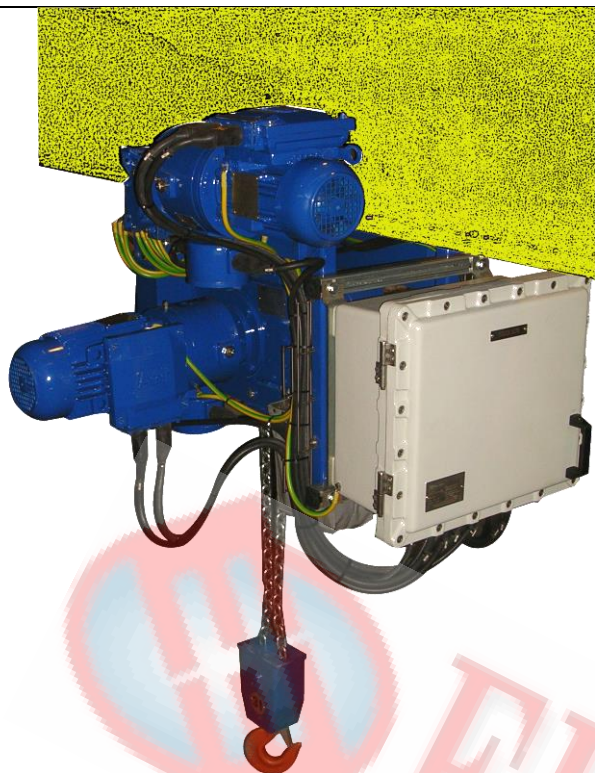
### - Explosion protection to EN

### - Ambient temperatures

- 20° C	+40° C
Up to	
-25° C	+55° C



## EXPLOSION-PROOF ELECTRICAL CHAIN HOIST BCX





## EXPLOSION-PROOF ELECTRICAL CHAIN HOIST BCX



CAPACITY	TYPE	FALLS	HOOK PATH	DUTY	LIFTING CHAIN	1 Lifting Speed m/min		2 Lifting Speed m/min	
Kg		n°	m	Fem/ISO	mm	50Hz	60Hz	50 Hz	60 Hz
250	BCX2025	1	3	2m/M5	6x18	4	4,8	4 2	4,8 2,4
500	BCX2050	1	3	2m/M5	6x18	4	4,8	4 2	4,8 2,4
1000	BCX3100	1	3	2m/M5	7x21	4	4,8	4 2	4,8 2,4
2000	BCX4200	1	3	2m/M5	10x28	4	4,8	4 2	4,8 2,4
2500	BCX4250	1	3	1Am/M4	10x28	4	4,8	4 2	4,8 2,4
3000	BCX5300	2	3	2m/M5	10x28	2	2,4	2 1	2,4 1,2
5000	BCX5500	2	3	1Am/M4	10x28	2	2,4	2 1	2,4 1,2
6000	BCX5600	3	3	1Am/M4	10x28	1,6	2	1,6 0,8	2 1
7500	BCX5750	3	3	1Bm/M3	10x28	1,6	2	1,6 0,8	2 1
10000	BCX8100	4	3	1Am/M4	10x28	2	2,4	2 1	2,4 1,2



## EXPLOSION-PROOF ELECTRICAL CHAIN HOIST BCX

CAPACITY	TYPE	FALLS	HOOK PATH	DUTY Fem/ISO	LIFTING CHAIN	Lifting Speed m/min	
Kg		n°	m		mm	50Hz	60Hz
1000	BCSX3100	1	3	2m/M5	7x21	4 /0,4	4,8/0,48
2000	BCSX4200	1	3	2m/M5	10x28	4 /0,4	4,8/0,48
2500	BCSX4250	1	3	1Am/M4	10x28	4 /0,4	4,8/0,48
3000	BCSX5300	2	3	2m/M5	10x28	2/0,2	2,4/0,24
5000	BCSX5500	2	3	1Am/M4	10x28	2/0,2	2,4/0,24
6000	BCSX5600	3	3	1Am/M4	10x28	1,6/0,16	2/0,2
7500	BCSX5750	3	3	1Bm/M3	10x28	1,6/0,16	2/0,2
10000	BCSX8100	4	3	1Am/M4	10x28	2/0,2	2,4/0,24